



LOCKS & DOOR ACCESSORIES



Sapphire Business Park

P.O BOX 103459-00101

Mlolongo, Mombasa Road

Tel: +254 703 799 999

Email: info@gymlocks.co.ke

Website: www.gymlocks.co.ke

GYMLOCKS' Cylinder Locks



GYM78A78WH/GP

Material: Zinc Alloy

Plate length: 275mm

Thickness: 85mm

Lock-body: Cylinder

GYM105A27WH/GP



Material: Zinc Alloy

Plate length: 275mm

Thickness: 85mm

Lock-body: Cylinder

QUALITY



RELIABLE



SECURE



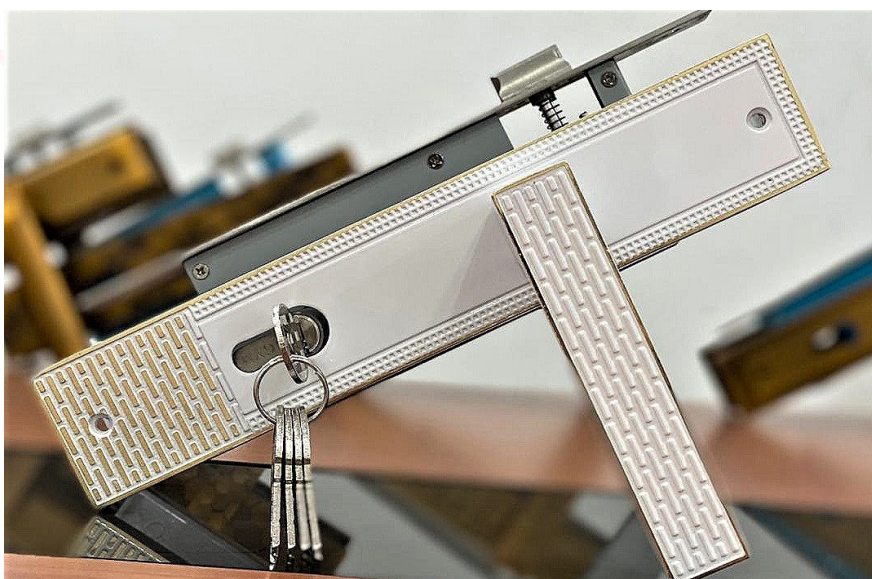
GYM52A63WH/GP

Material: Zinc Alloy

Plate length: 275mm

Thickness: 85mm

Lock-body: Cylinder



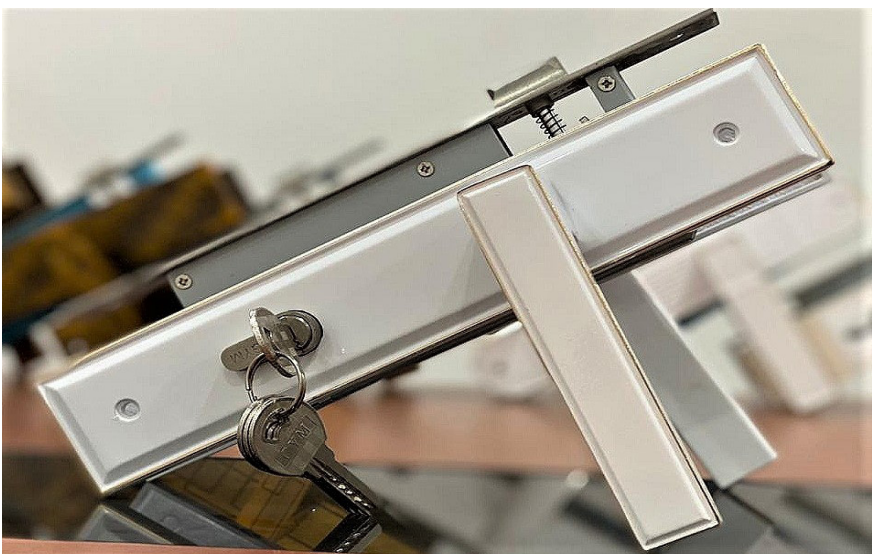
GYM55A45WH/GP

Material: Zinc Alloy

Plate length: 275mm

Thickness: 85mm

Lock-body: Cylinder



GYM70A70WH/GP

Material: Zinc Alloy

Plate length: 275mm

Thickness: 85mm

Lock-body: Cylinder

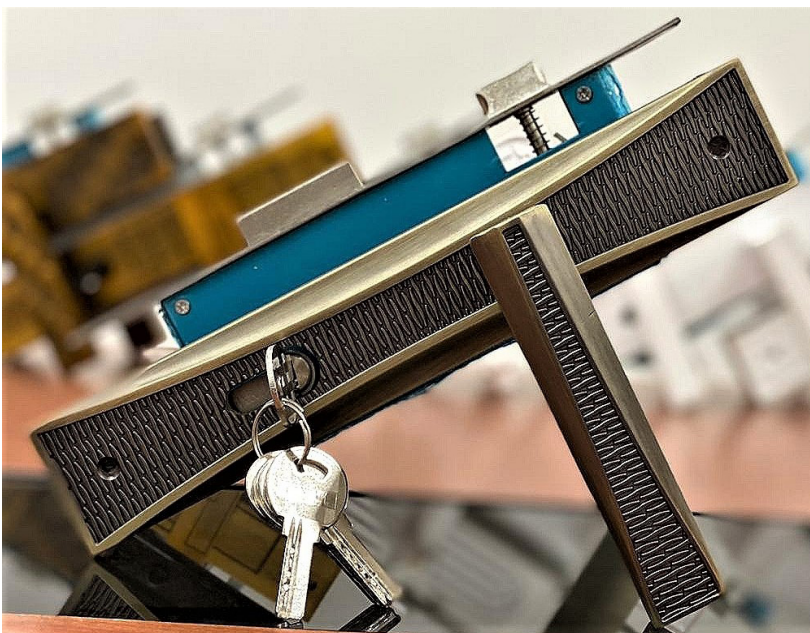
QUALITY



RELIABLE



SECURE



GYM73A73MAB

Material: Zinc Alloy

Plate length: 275mm

Thickness: 85mm

Lock-body: Cylinder



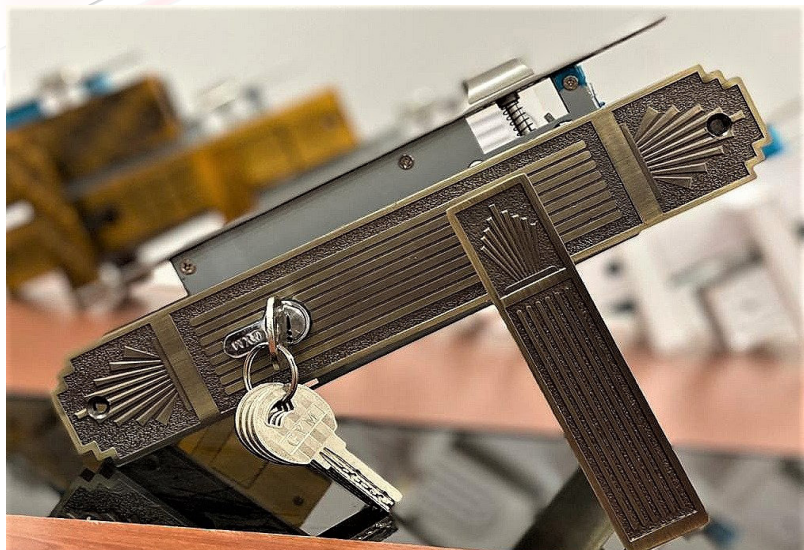
S79A70MAB

Material: Zinc Alloy

Plate length: 275mm

Thickness: 85mm

Lock-body: Cylinder



GYM71A66MAB

Material: Zinc Alloy

Plate length: 275mm

Thickness: 85mm

Lock-body: Cylinder

QUALITY



RELIABLE



SECURE



GYM57A31MCF

Material: Zinc Alloy

Plate length: 275mm

Thickness: 85mm

Lock-body: Cylinder



GYM71A66MAC

Material: Zinc Alloy

Plate length: 275mm

Thickness: 85mm

Lock-body: Cylinder



GYM80A80MAC

Material: Zinc Alloy

Plate length: 275mm

Thickness: 85mm

Lock-body: Cylinder

QUALITY



RELIABLE



SECURE



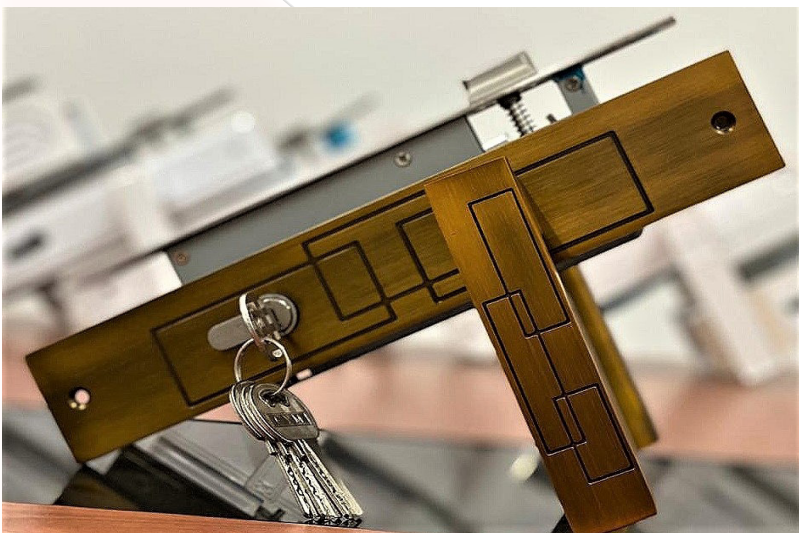
GYM78A78MCF

Material: Zinc Alloy

Plate length: 275mm

Thickness: 85mm

Lock-body: Cylinder



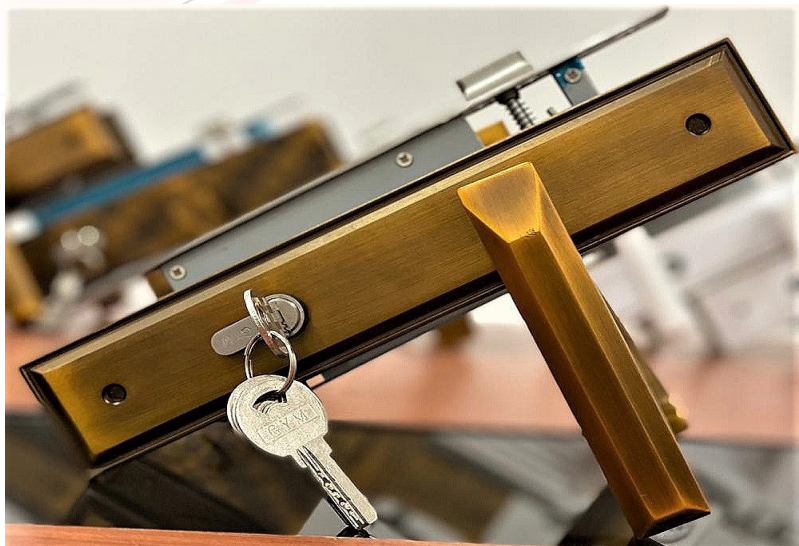
GYM151A95MCF

Material: Zinc Alloy

Plate length: 275mm

Thickness: 85mm

Lock-body: Cylinder



GYM79A70MCF

Material: Zinc Alloy

Plate length: 275mm

Thickness: 85mm

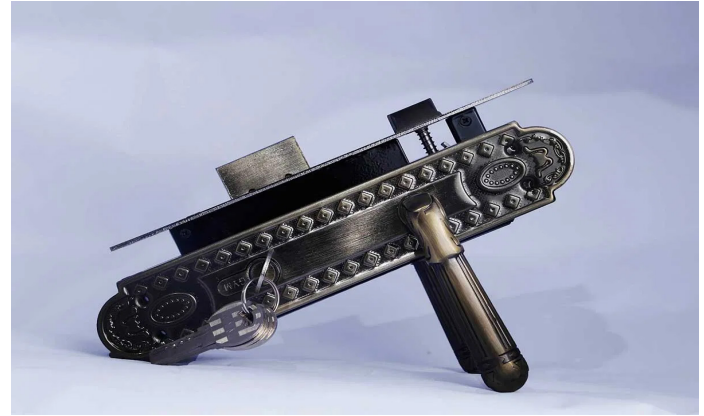
Lock-body: Cylinder





TARA - L 450

Luxurious Chrome plated door lock
Cylinder lock body
Suitable for decorations in gates of villas, exterior doors, hotels, government units, and office buildings
Comes with a set of five precision keys
Insertion prevention bolts



TARA - L 56 Antique

Luxurious antique door lock
Available in elegant shapes to suit your decor needs.
Suitable for decorations in gates of villas, exterior doors, hotels, government units, and office buildings
Comes with a set of precision keys
Insertion prevention bolts



TALIA - G215

Silver plated door lock
Cylinder lock body
Suitable for both interior and exterior doors
Comes with 5 non-duplicable keys
Insertion prevention bolts



WAYN - M775

Silver plated door lock
Cylinder lock body
Suitable for both interior doors
Comes with 3 non-duplicable keys
Insertion prevention bolts



SMART LOCKS- Apartment Locks

LS-8015-MF+MM-6268-BG- DS/9500#



- Fingerprint + Code + Key
- Stainless steel, touch screen
- Sleep model: Open status setting for meeting/party
- Low voltage alarm, external power poles
- 100pcs fingerprint user, 1pc code user

LS-8105-FM+BXG/PVD-7#



- MF Card + Keypad + Key
- Stainless steel
- Doorbell: sleep mode: open status setting for meeting/party
- Low voltage alarm, external power poles
- 200pcs user including card + password

QUALITY



RELIABLE



SECURE

LS-8018-GY-ZW+MM-ZL/XBJ/Antique Brass-7#



- Fingerprint + MF Card + Keypad + Key.
- Living dermis layer scanning.
- 1 Master & 100 users' code.
- User friendly LCD display.
- Lift up handle for double lock.
- Doorbell: sleep model; open status setting for meeting/party.
- Option finishes: Champagne Gold, Silver and Red Copper.



LS-8015-MF+MM-6268-BG- DS/9500#

- Zinc alloy.
- MF Card + Code + Mechanical Keys.
- Lift up handle for double lock (9500#).
- Sleeping mode to prevent illegal attempt.
- Option with 9500# mortise or DS mortise.
- Low battery alert; 4 * AA Alkaline battery.
- Panel size; 156.7 * 69.3



QUALITY



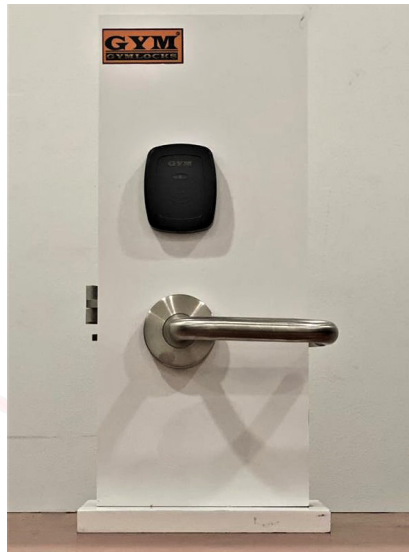
RELIABLE



SECURE

SMART LOCKS- Hotel Locks

LS-8203-MFBXG- 6108-8#



- Hotel lock made of premium Cast Steel.
- Comes with a MF card unlock + a set of Keys.
- Contact-less key card lodging systems.
- Electronic lock-set with #8 ANSI STD Mortise.
- Sealed PCB (Printed Circuit Board)
- Door ajar alert system
- Dead Bolt in back plate
- Software Version in different languages
- Product Weight: 3.5 Kg

GYM-8002-ZMT



- Hotel lock, Europe style. Cast Steel
- MF card unlock
- Contactless key card lodging systems
- Electronic lockset with #8 ANSI STD
- Mortise, option in 2#,3# Mortise
- Sealed PCB (Printed Circuit Board)
- Optional finishes in PVD gold or Stainless Steel
- Dead Bolt in back plate
- Software Version in different languages Panel:287*73mm, : 3.5kg



GYM-LS-8105-PVD-7#



- Hotel lock, Simple and classic
- MF card unlock
- Contactless key card lodging systems
- Electronic lockset with #8 ANSI STD Mortise
- Optional finishes in PVD gold or Stainless Steel
- Software Version in different languages
- Panel: 259*72mm
- Weight: 3.5kg

GYM-LS-8200-BXG

- Hotel lock
- Electronic lockset with #8 ANSI STD Mortise, option in 2#, 3# Mortise
- Contactless key card lodging systems
- Sealed PCB (Printed Circuit Board)
- Optional finishes in PVD gold or Stainless Steel
- Dead Bolt in back plate
- Software Version in different languages
- Panel: 287*73mm, Weight: 3.5kg



QUALITY



RELIABLE



SECURE



GYM543MFSA

- Hotel lock European Design
- Gold plating and Black toughened plastic body
- Key-less entry system
- Contactless key card lodging systems
- Sealed PCB (Printed Circuit Board)
- Software Version in different languages
- Panel: 287*73mm,
- Weight: 3.5kgMF

GYM343MFGA



- Hotel lock European Design
- Gold plating
- Bulk head Design
- Key-less entry system
- Contactless key card lodging systems
- Sealed PCB (Printed Circuit Board)
- Software Version in different languages
- Panel: 287*73mm,
- Weight: 3.5kgMF



GYMC566MFSB



- Hotel lock European Design
- Gold plating
- Key-less entry system
- Contactless key card lodging systems
- Sealed PCB (Printed Circuit Board)
- Software Version in different languages
- Panel: 287*73mm,
- Weight: 3.5kgMF

GYM349RFSA

- Sealed PCB (Printed Circuit Board)
- Contact-less key card lodging systems.
- Optional finishes in PVD gold or Stainless Steel
- Dead Bolt in back plate
- Software Version in different languages
- Panel: 287*73mm,
- Weight: 3.5kgMF card unlock



QUALITY



RELIABLE



SECURE

GYM-8105-FMT



- Hotel lock
- Made of Zinc and Toughened Plastic
- MF card unlock+ Key
- Contactless key card lodging systems
- Electronic lockset with #8 ANSI STD Mortise
- Sealed PCB (Printed Circuit Board)
- Door ajar alert
- Dead Bolt in back plate
- Software Version in different languages

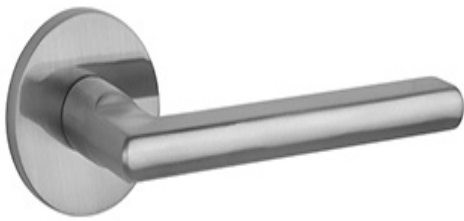
GYM-8088-MF-BXG

- Hotel lock, Zinc
- MF card unlock+ Key
- Contactless key card lodging systems
- Electronic lockset with #8 ANSI STD Mortise
- Sealed PCB (Printed Circuit Board)
- Door ajar alert
- Dead Bolt in back plate
- Software Version in different languages



GYM-8202-MF

- Hotel lock, Cast Steel.
- MF card unlock+ Key
- Contactless key card lodging systems
- Software Version in different languages



- Electronic lock-set with #8 ANSI STD Mortise
- Sealed PCB (Printed Circuit Board)
- Door ajar alert
- Dead Bolt in back plate

GYM-LS-8--#

- Hotel lock, zinc alloy
- MF card unlock +key
- Contactless key card lodging systems
- Sealed PCB (Printed Circuit Board),
- Door ajar alert
- Welcome light indicator
- Dead Bolt in back plate



QUALITY



RELIABLE



SECURE

GYM-8068-MF-BXG-8#3509

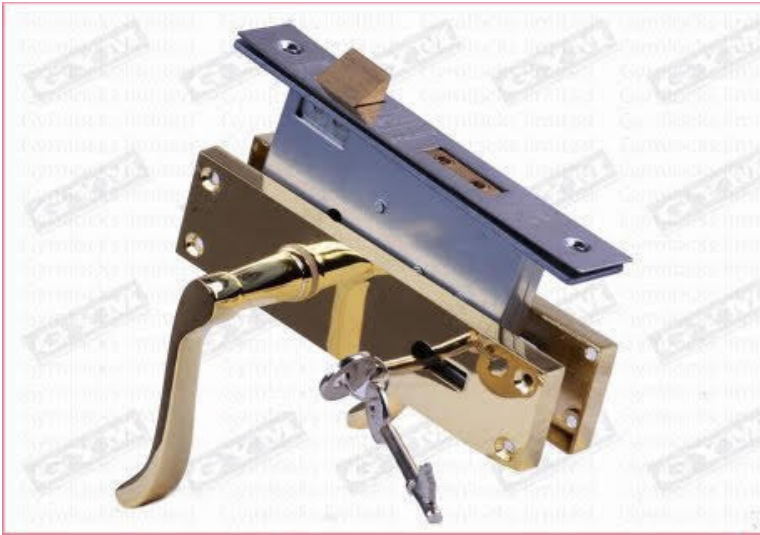


- Hotel lock, zinc alloy
- MF card unlock +key
- Contactless key card lodging systems
- Electronic lock-set with #8 ANSI STD Mortise,

- Sealed PCB (Printed Circuit Board),
- Door ajar alert
- Optional finishes in gold or silver
- Dead Bolt in back plate.
- Software Version in different languages;
- Weight:3.5kg

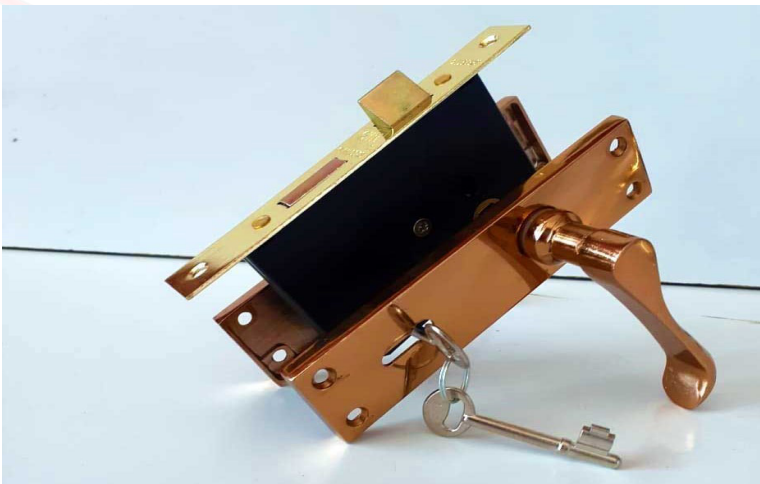


LEVER LOCKS



Rozie 3 Lever

Made of high quality polished brass/Aluminum
Available in both bright and dark colors
Suitable for wooden in-house doors
Easy to install and does not rust
Firm and steady lock system and can be integrated into the home security system
Comes with a set of two keys



Rozie 2Lever lock

Made of high quality polished brass giving it a glossy elegant look
Available in Aluminium, Brass bright and Brass dark options.
Suitable for wooden in-house doors
Easy to install and does not rust
Firm and steady lock system and can be integrated into the home security system
Comes with a set of two keys



Wayne Bathroom Lock

High quality polished chrome
Bathroom lockable only from the inside
Available override groove on the outside
Easy to install and does not rust
Available in Chrome and Aluminium finishes

QUALITY



RELIABLE



SECURE



QUALITY



RELIABLE



SECURE

